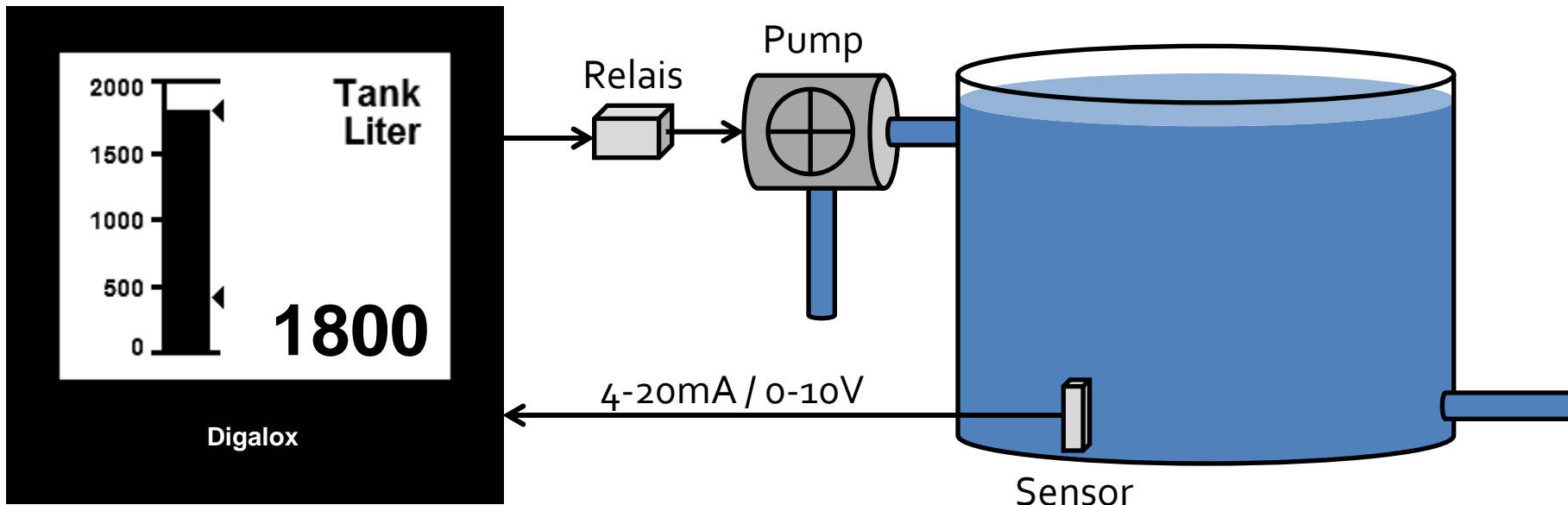


TDE Instruments

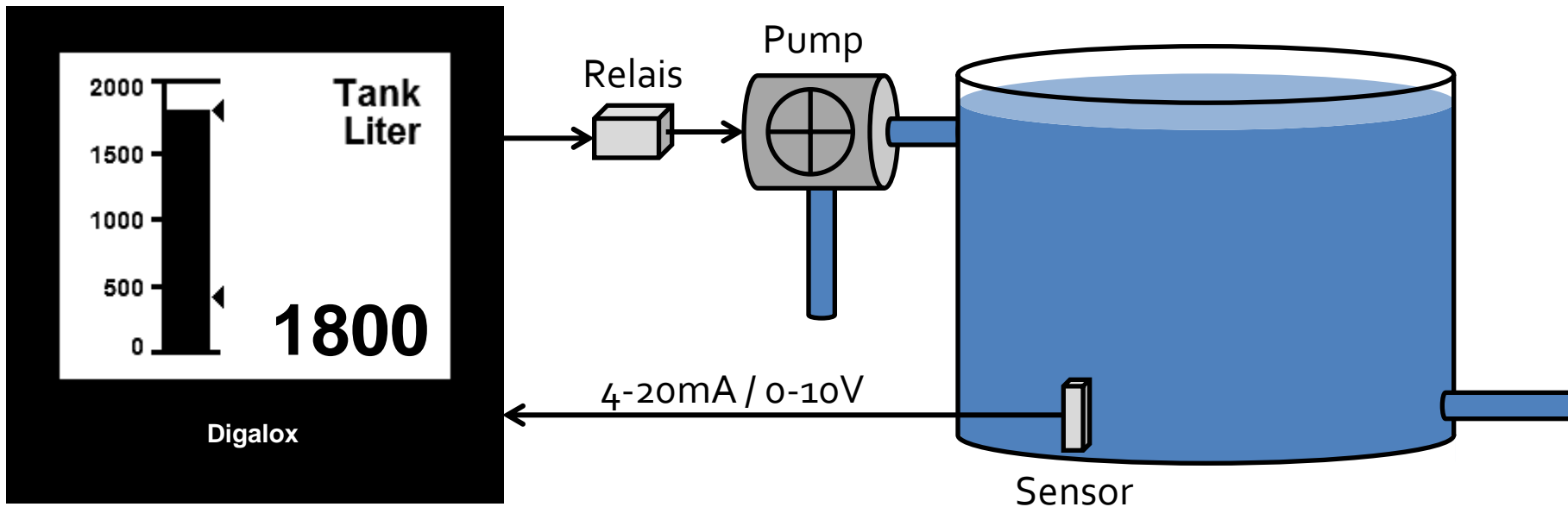
Digalox[®] DPM72 AVP / PP Application example Pump control



Application example pump control

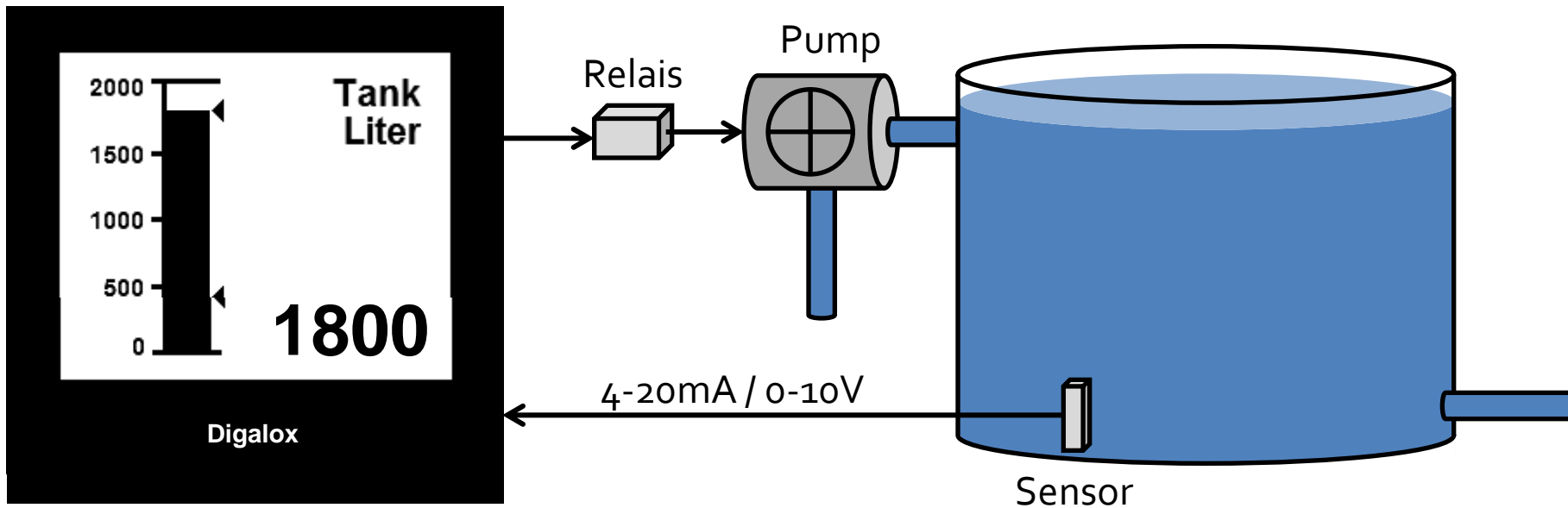
- Display of a liquid tank's level
- Activation of a pump when going beneath a certain level
- Deactivation of the pump when going above a certain level

Application example pump control



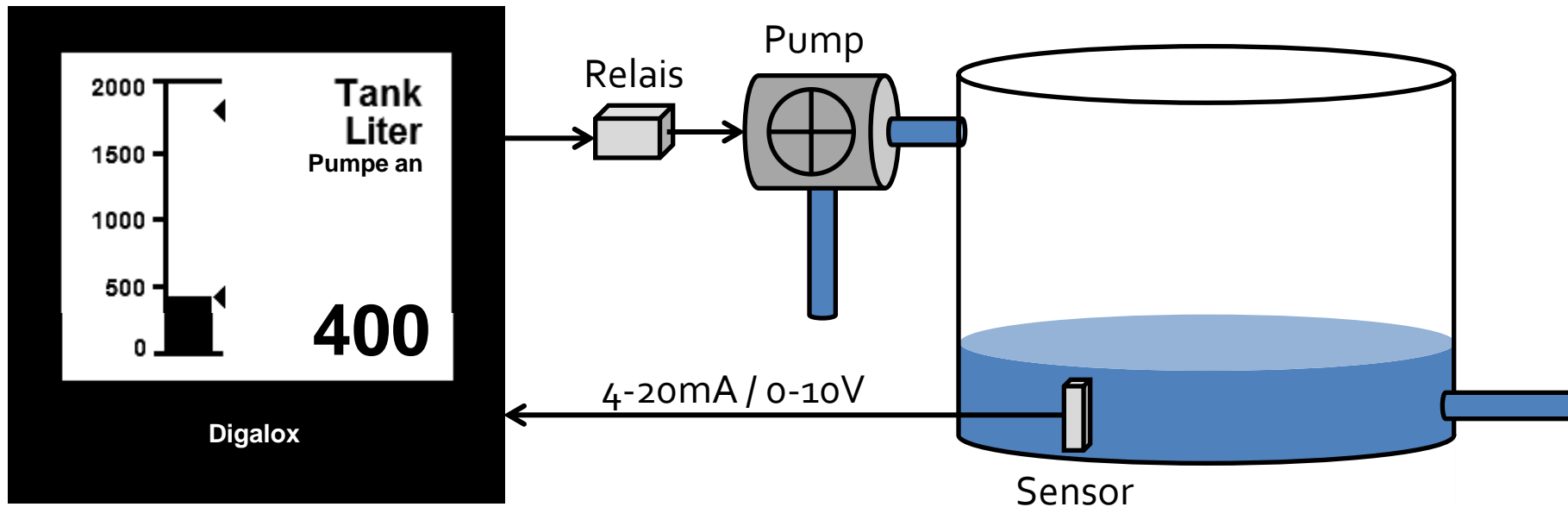
- Measurement of the level via an analog sensor
- Display as bargraph

Application example pump control



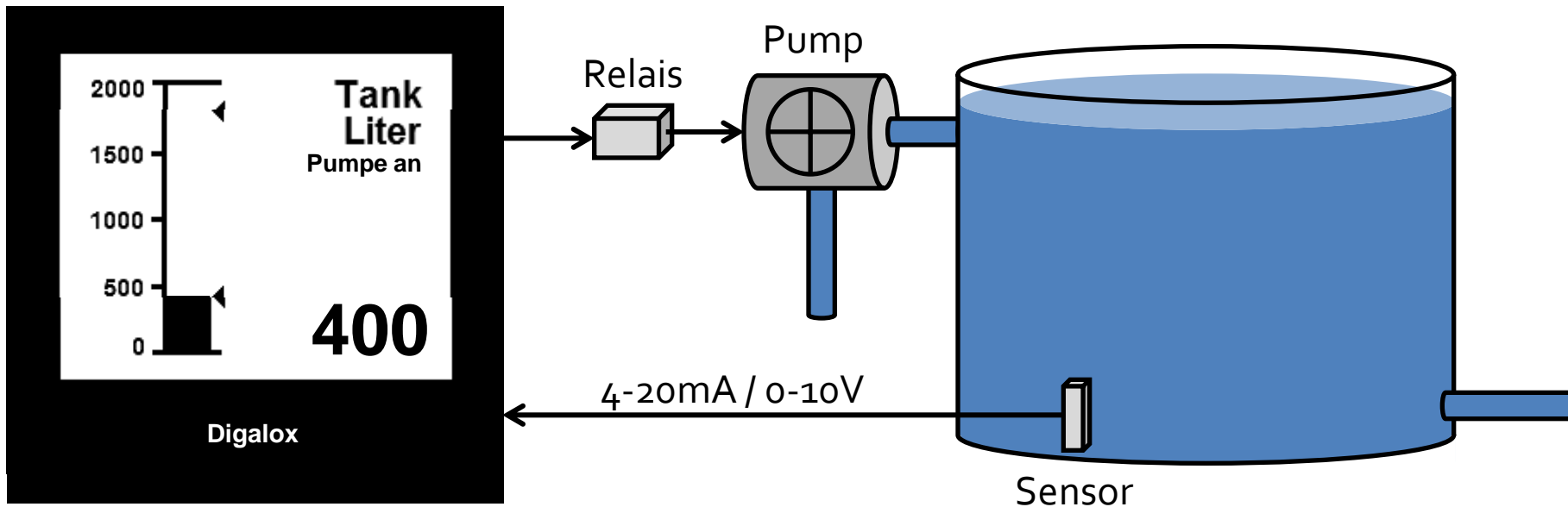
- Measurement of the level via an analog sensor

Application example pump control



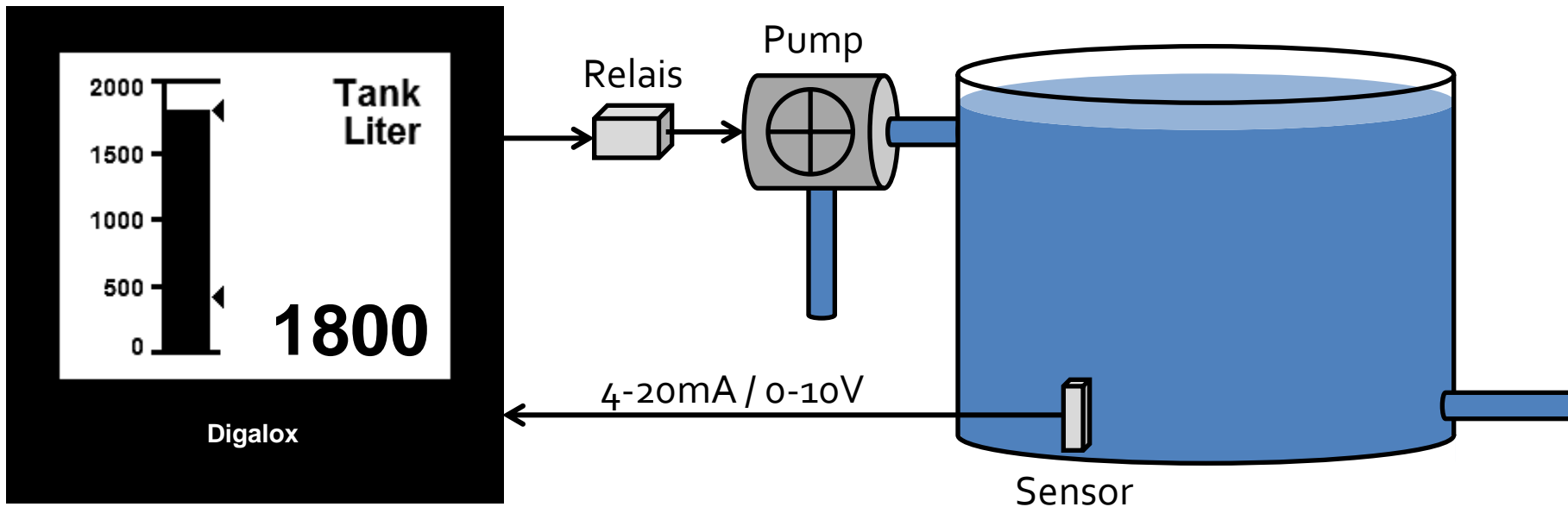
- When reaching a minimum level, output is activated
- Relais starts the pump

Application example pump control



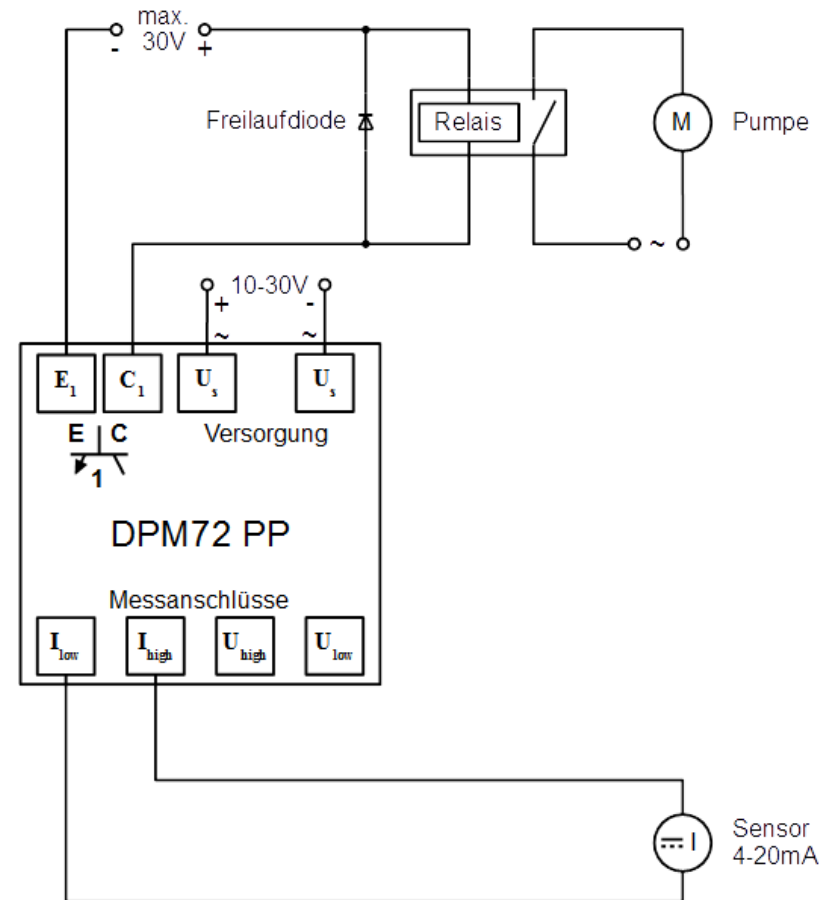
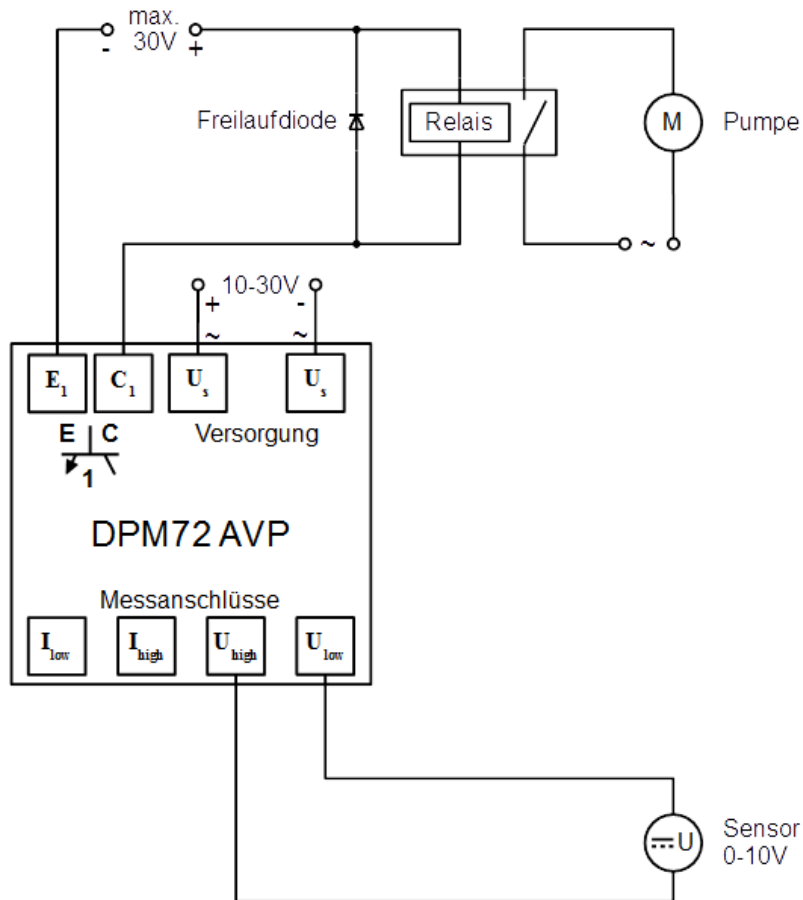
- Pump fills the tank
- Measurement of the level via an analog sensor

Application example pump control

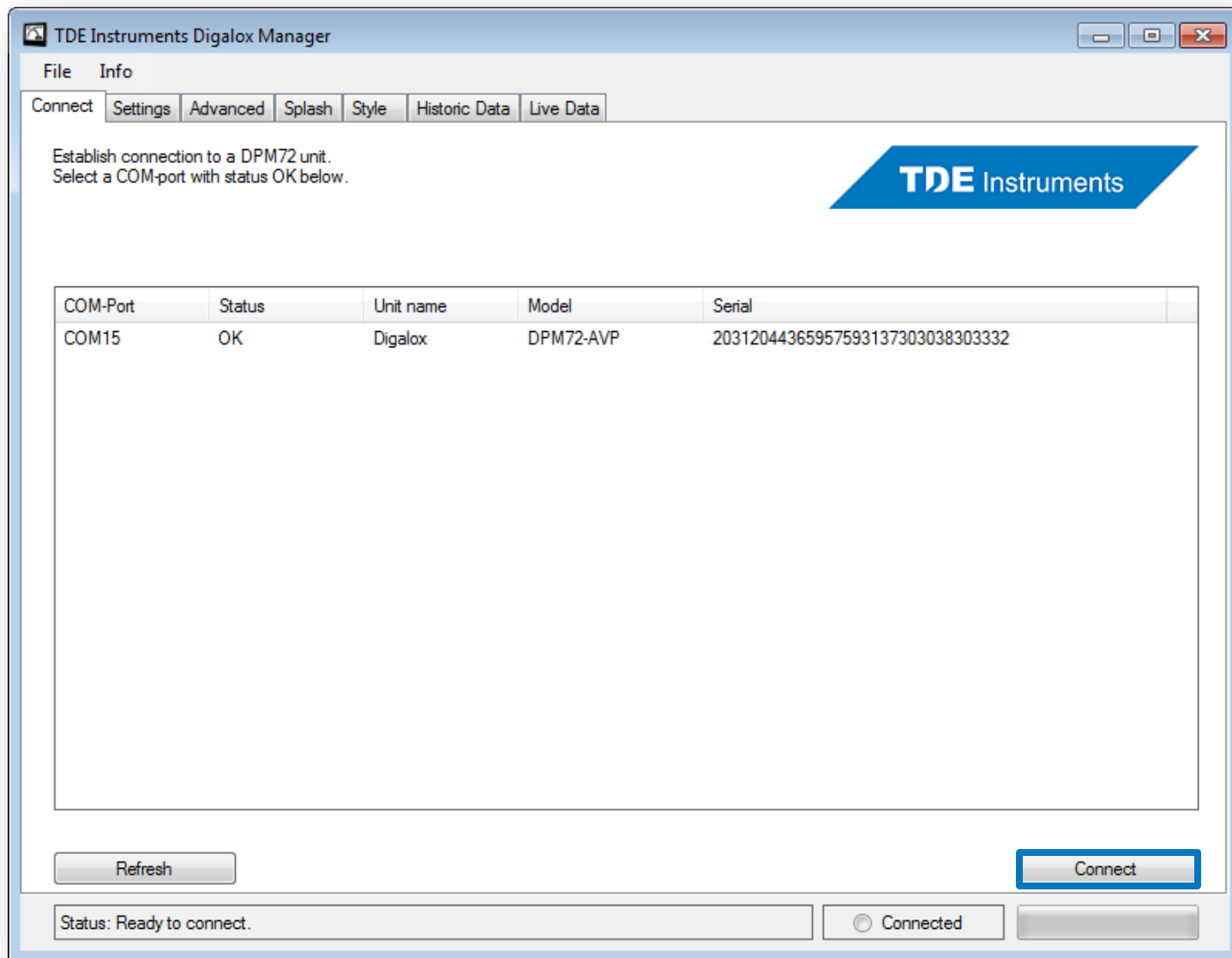


- When reaching a certain level, output is deactivated
- Relais stops the pump

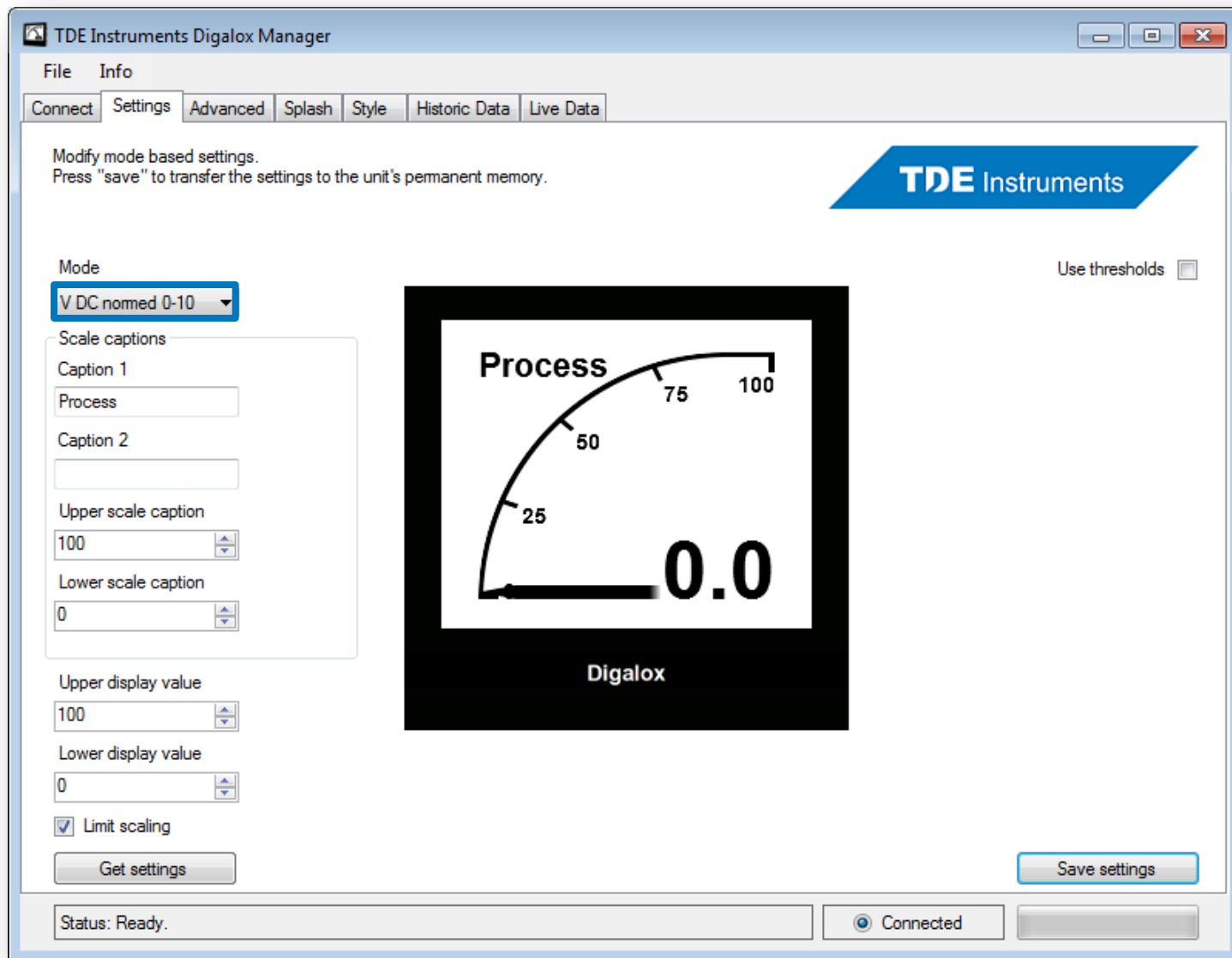
Connection of the unit



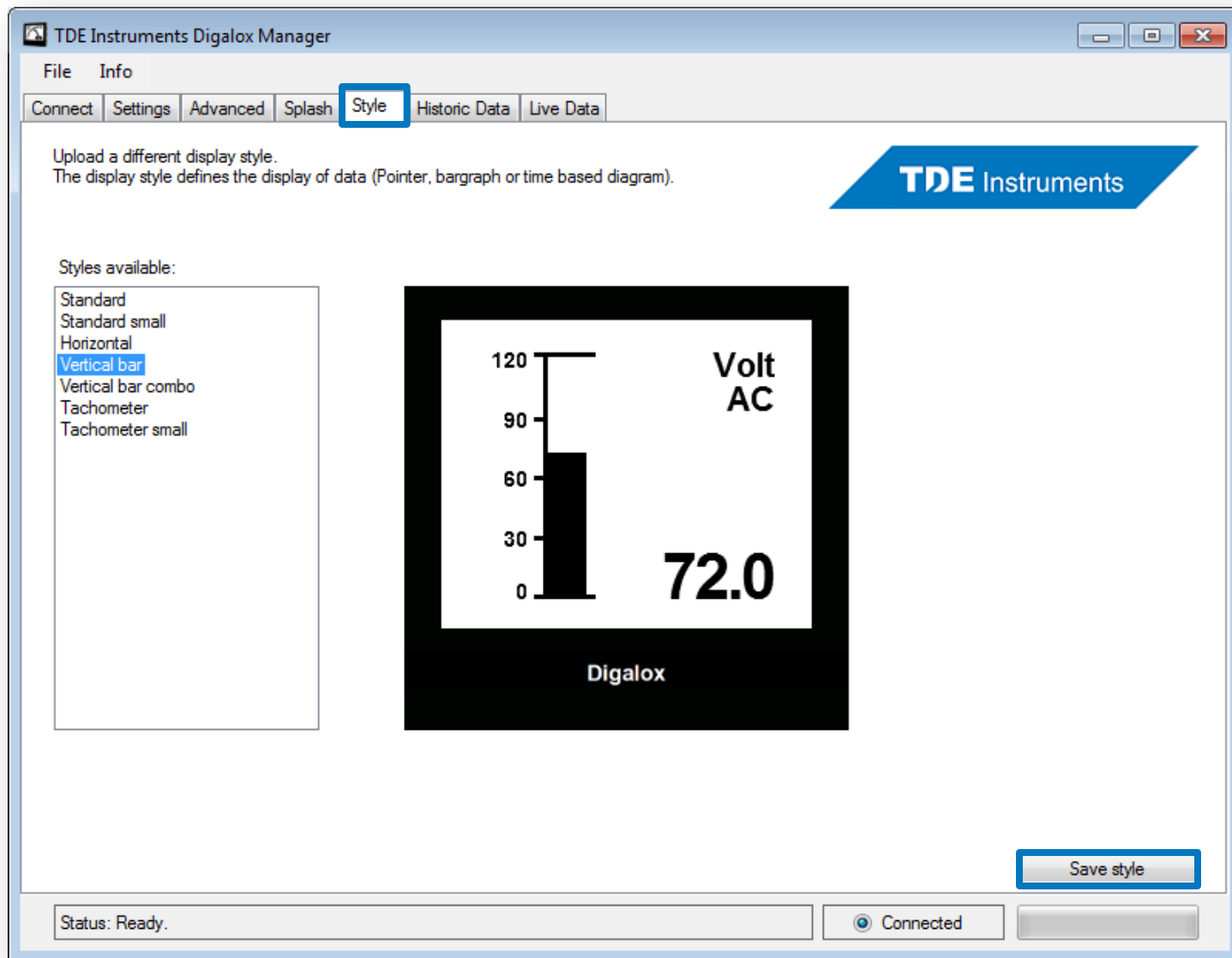
Configuration of the unit using Digalox-Manager



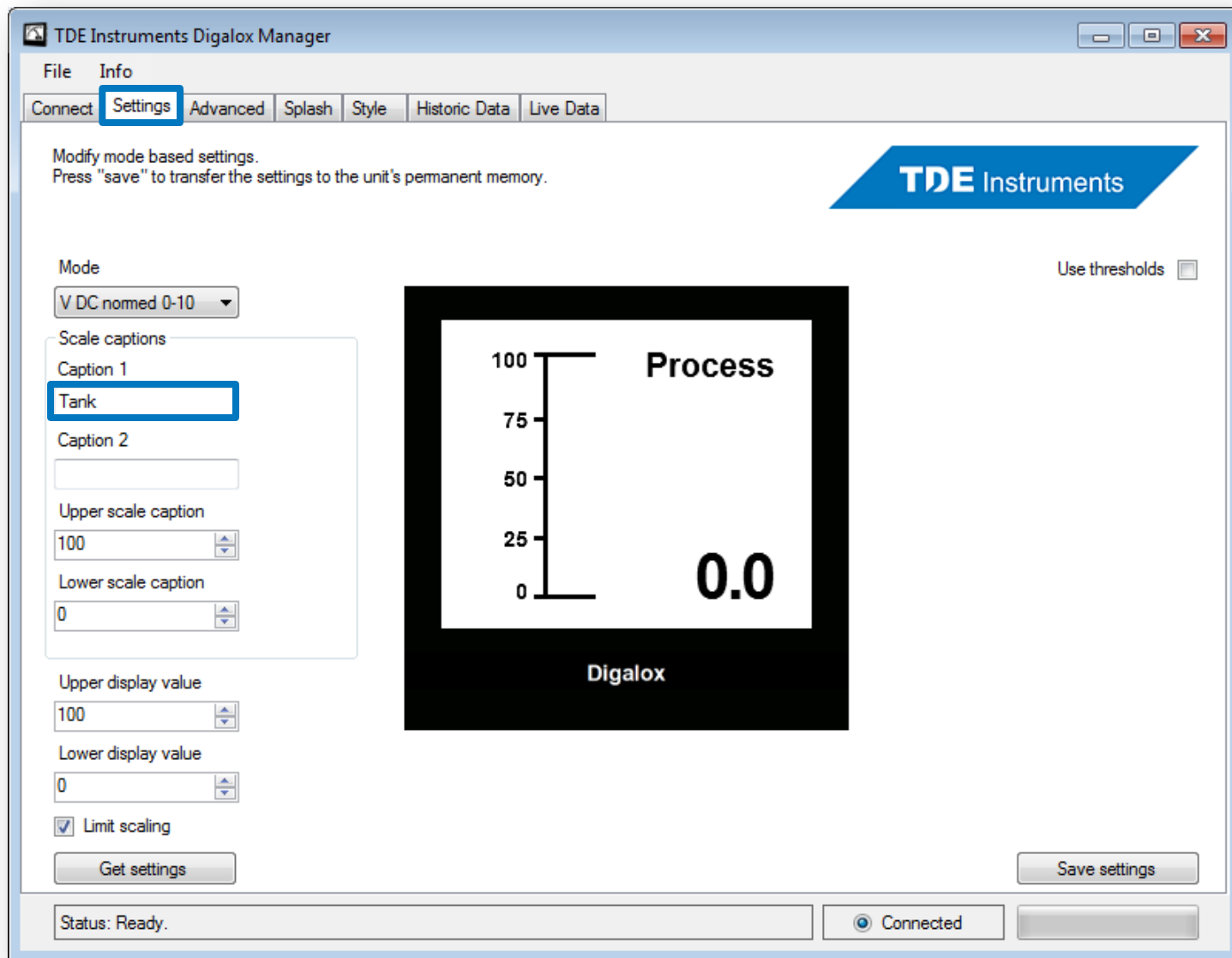
- Start Digalox Manager
- Connect



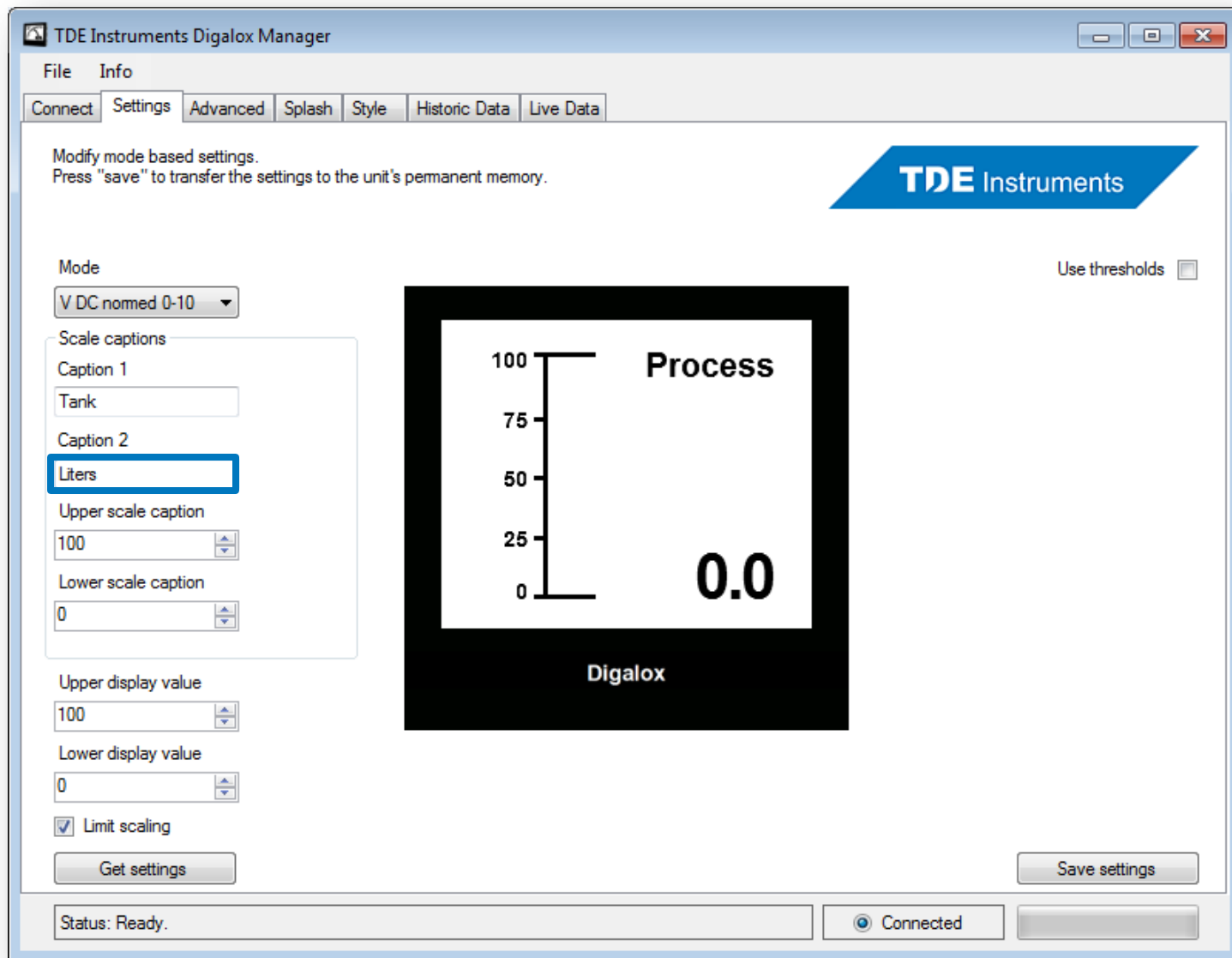
- Choose measurement mode 0-10V normed



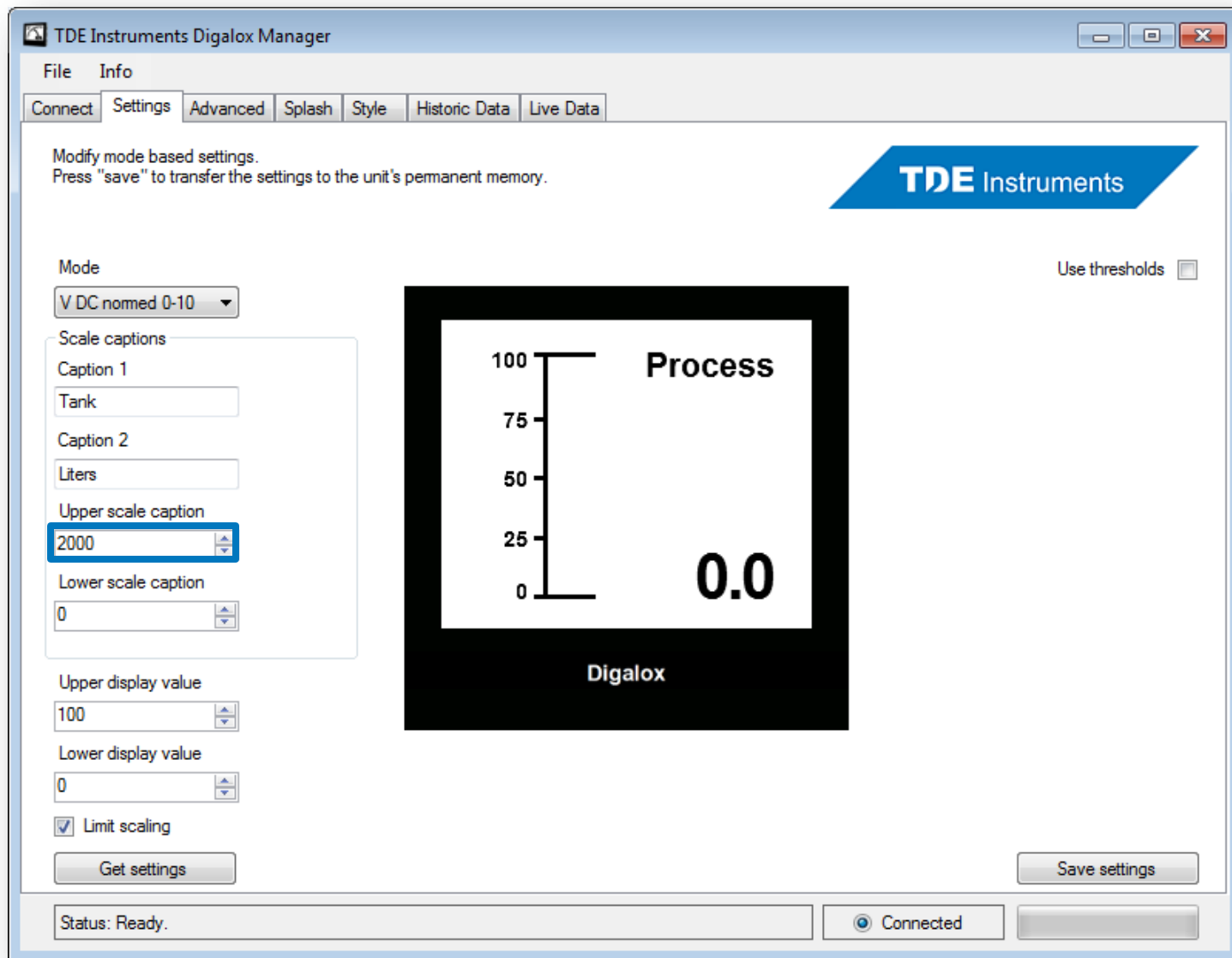
- Choose display style „Vertical bar“
- Save display style



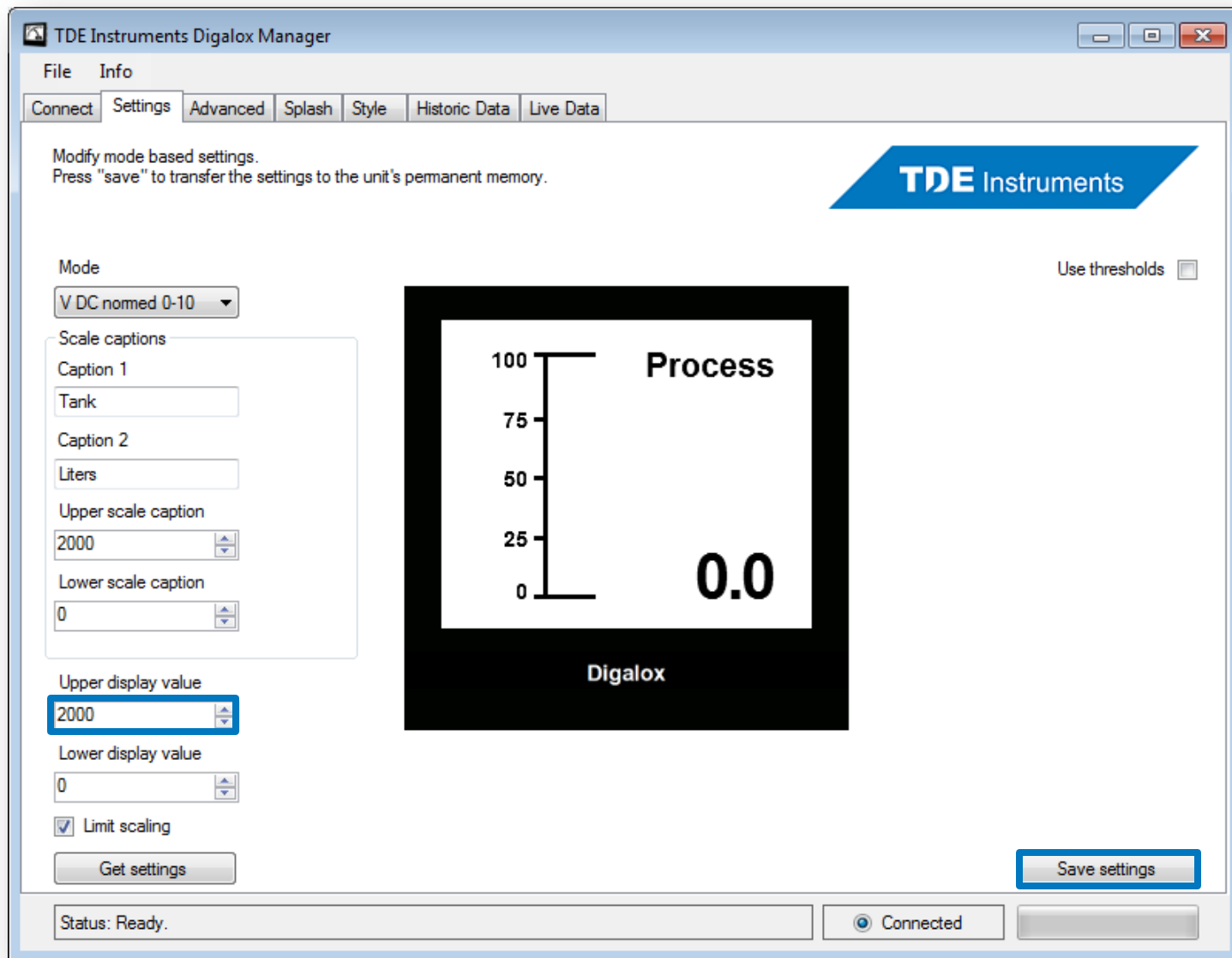
- Change to tab „Settings“
- Type first caption „Tank“



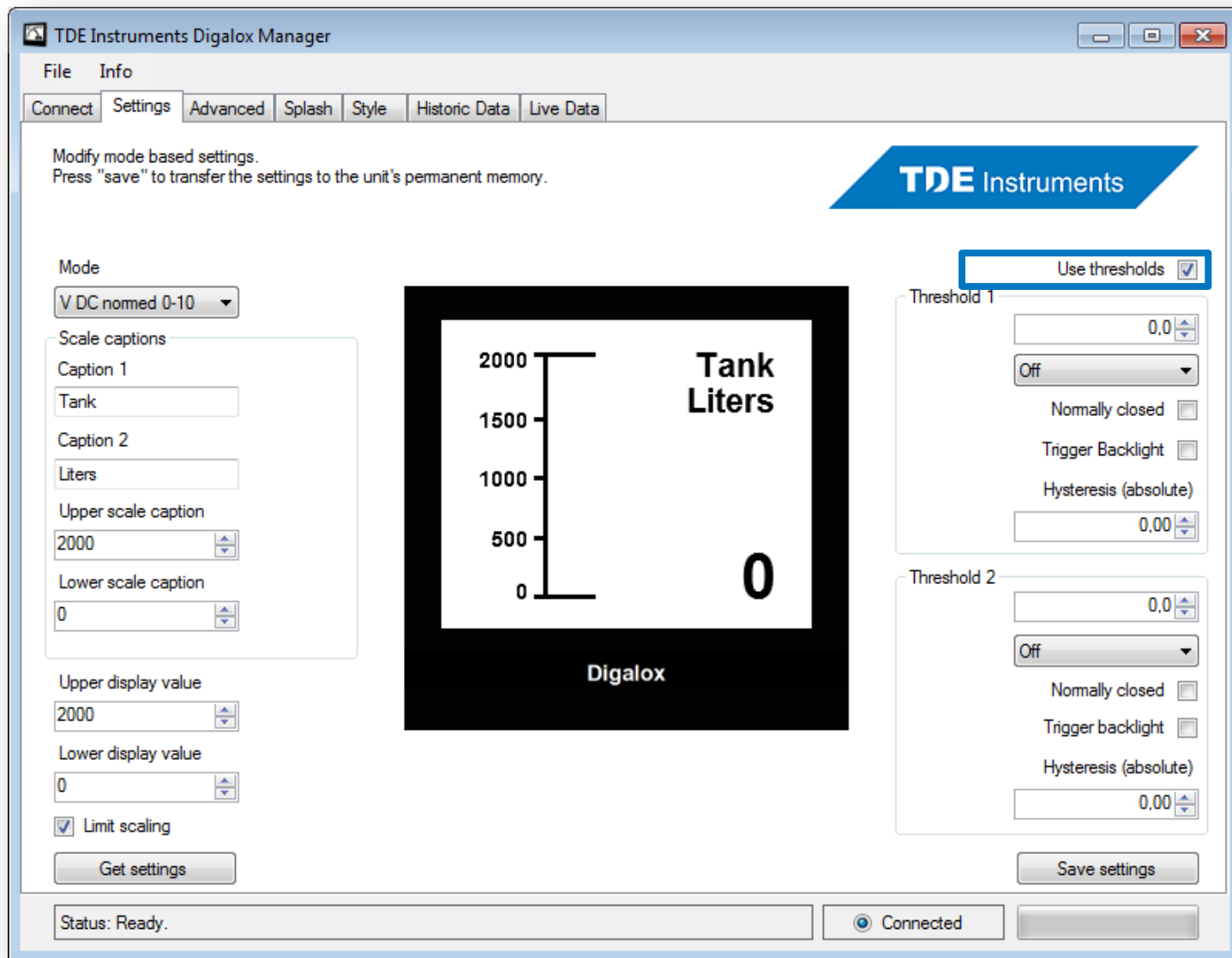
- Type second caption „Liters“



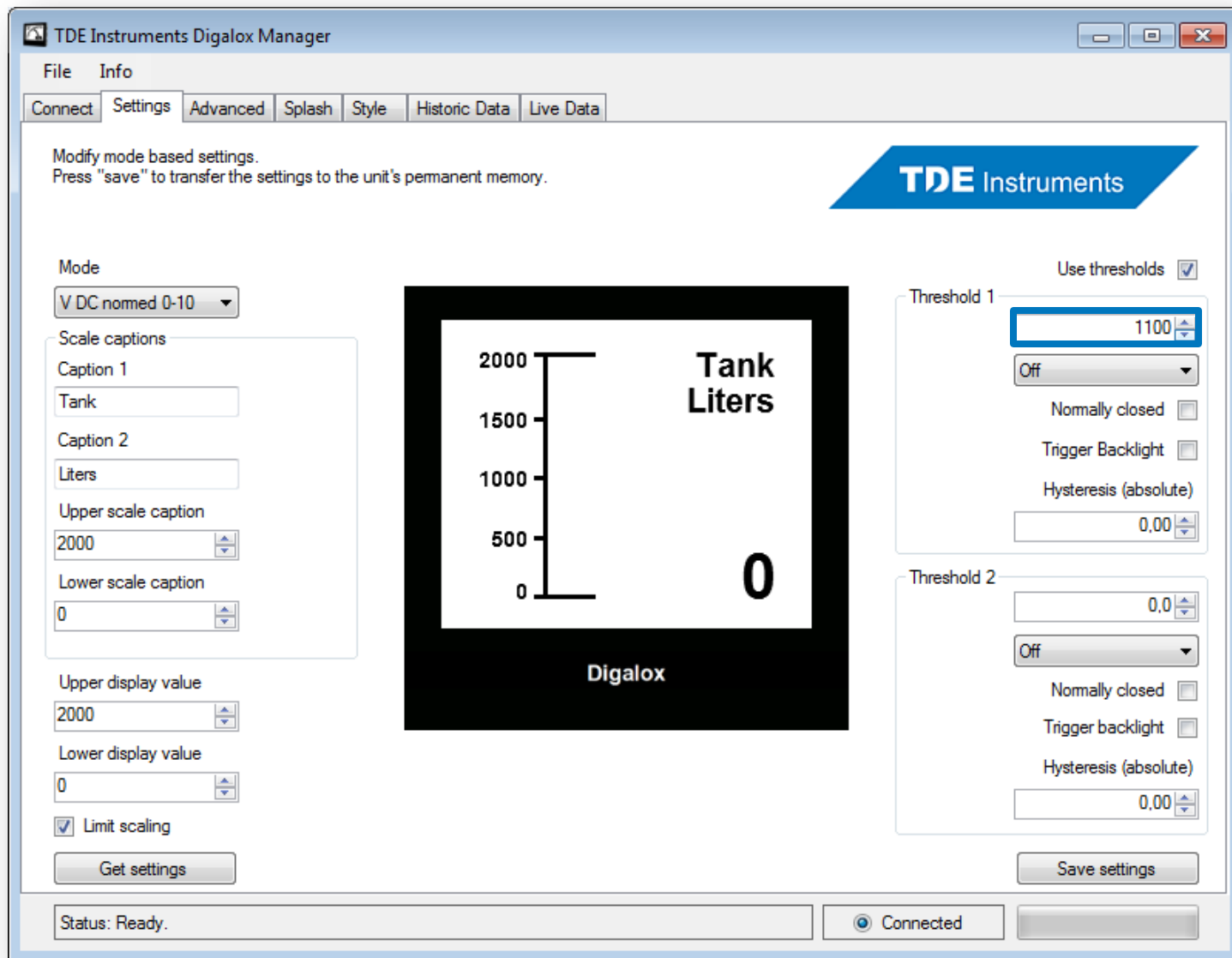
- Enter upper display caption 2000



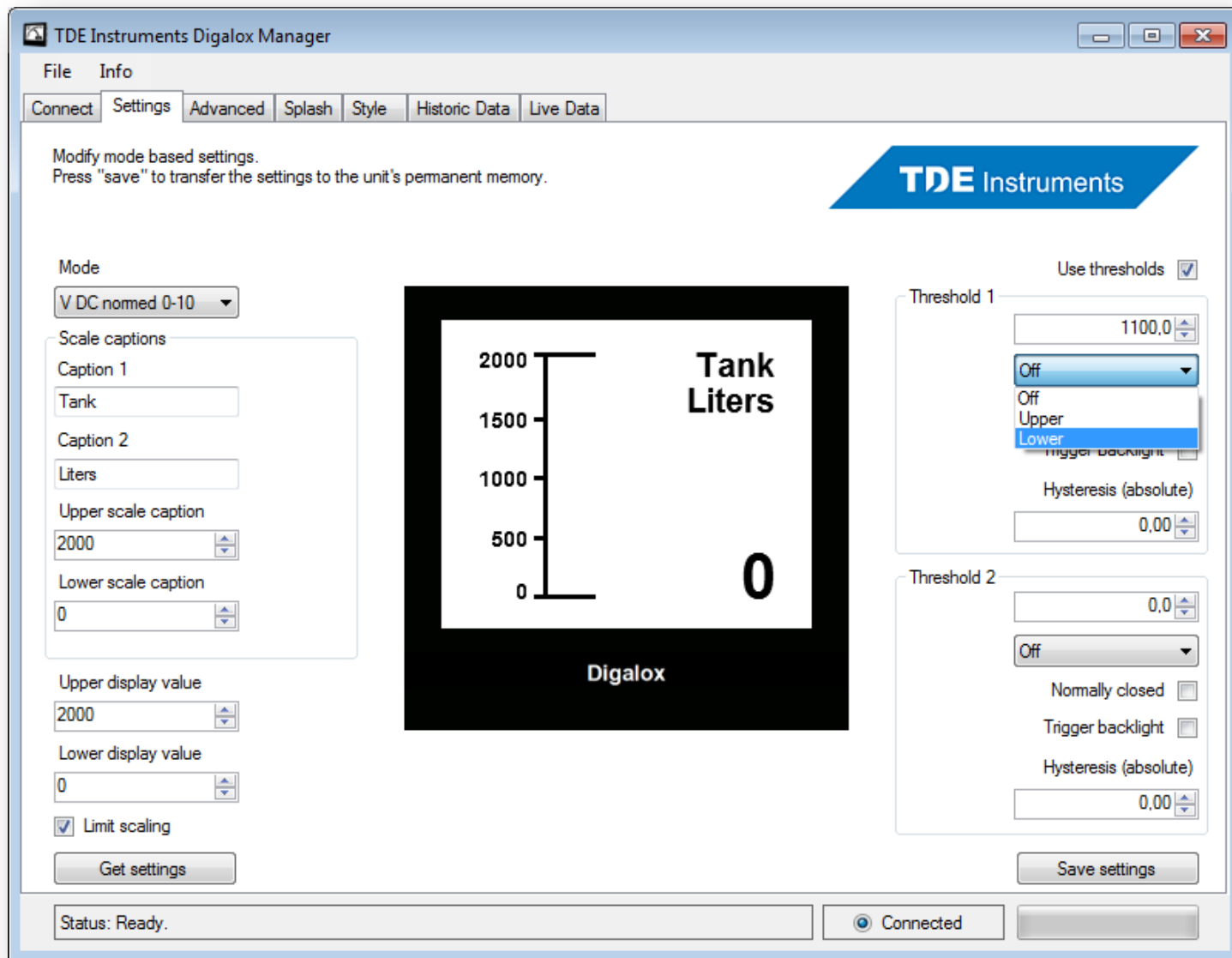
- Enter upper display value 2000 (equivalent to 10V)
- Save to view display preview



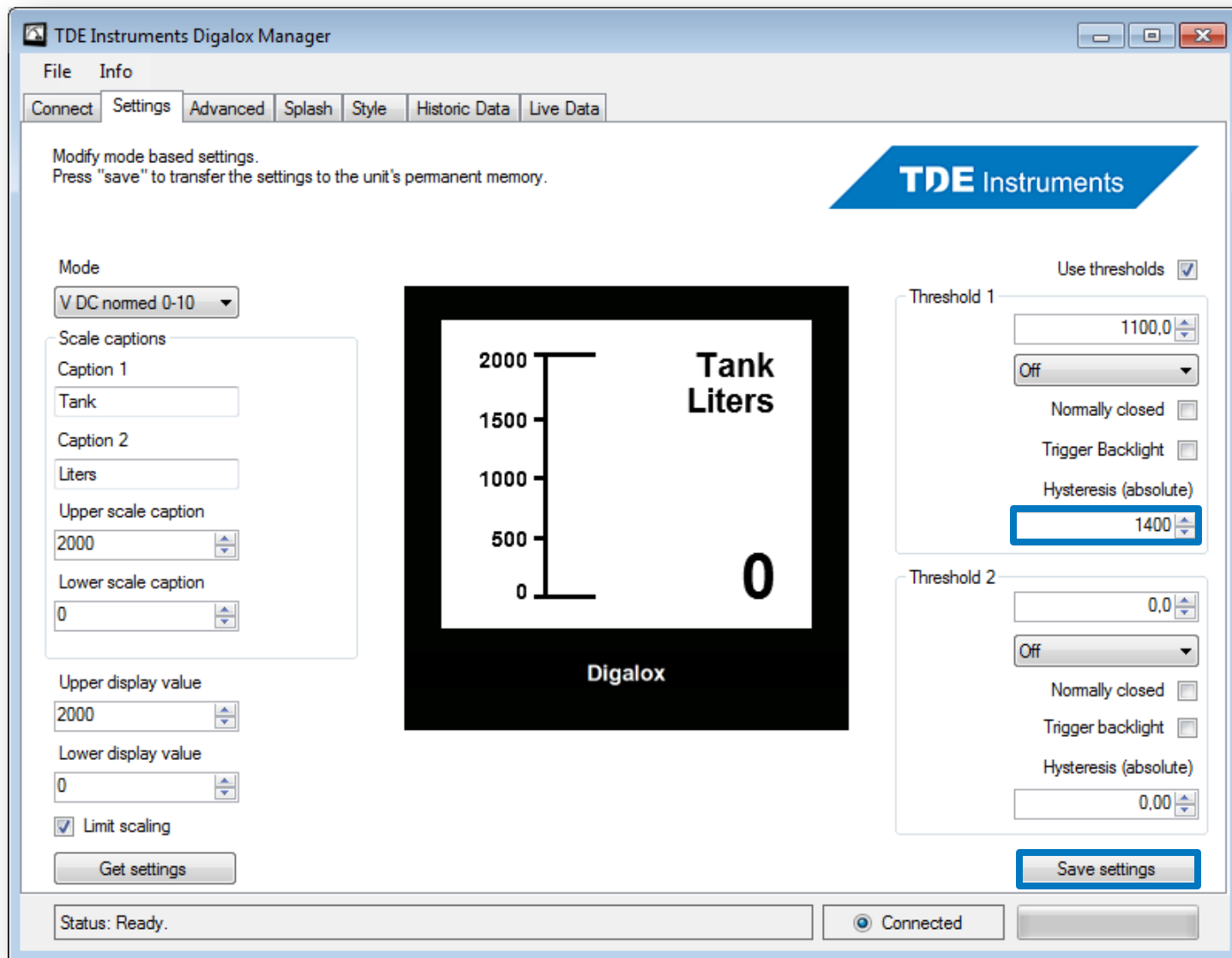
- Activate thresholds



- Enter threshold value 1100
- This is the center of the filling range



- Select threshold „Lower“



- Enter hysteresis 1400 (amount to be filled)
- Save to view display preview

TDE Instruments Digalox Manager

File Info

Connect Settings Advanced Splash Style Historic Data Live Data

Modify mode based settings.
Press "save" to transfer the settings to the unit's permanent memory.

TDE Instruments

Mode
V DC normed 0-10

Scale captions
Caption 1
Tank
Caption 2
Liters
Upper scale caption
2000
Lower scale caption
0

Upper display value
2000
Lower display value
0

Limit scaling

Get settings

Use thresholds

Threshold 1
1100,0
Lower
Normally closed
Trigger Backlight
Hysteresis (absolute)
1400,00

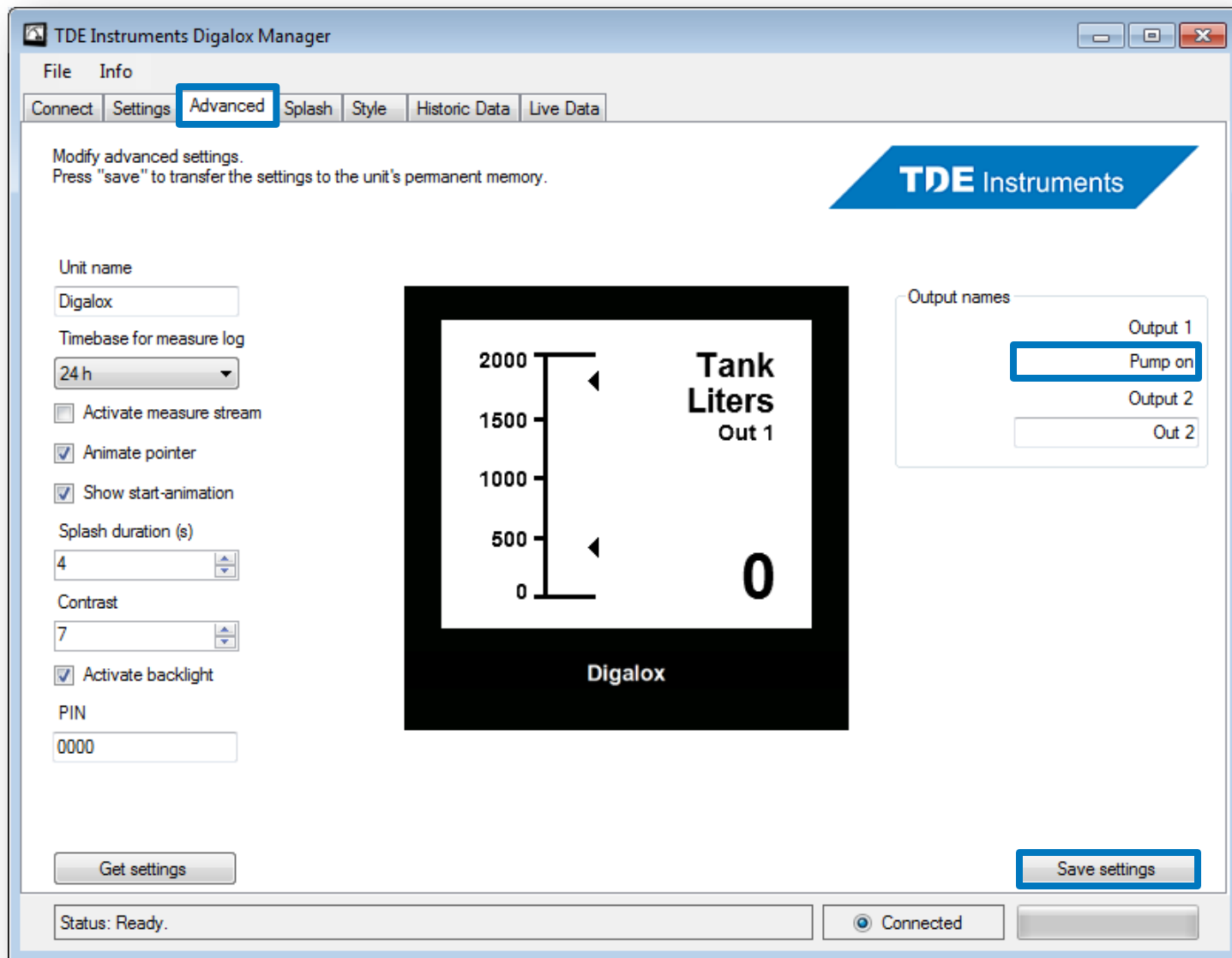
Threshold 2
0,0
Off
Normally closed
Trigger backlight
Hysteresis (absolute)
0,00

Save settings

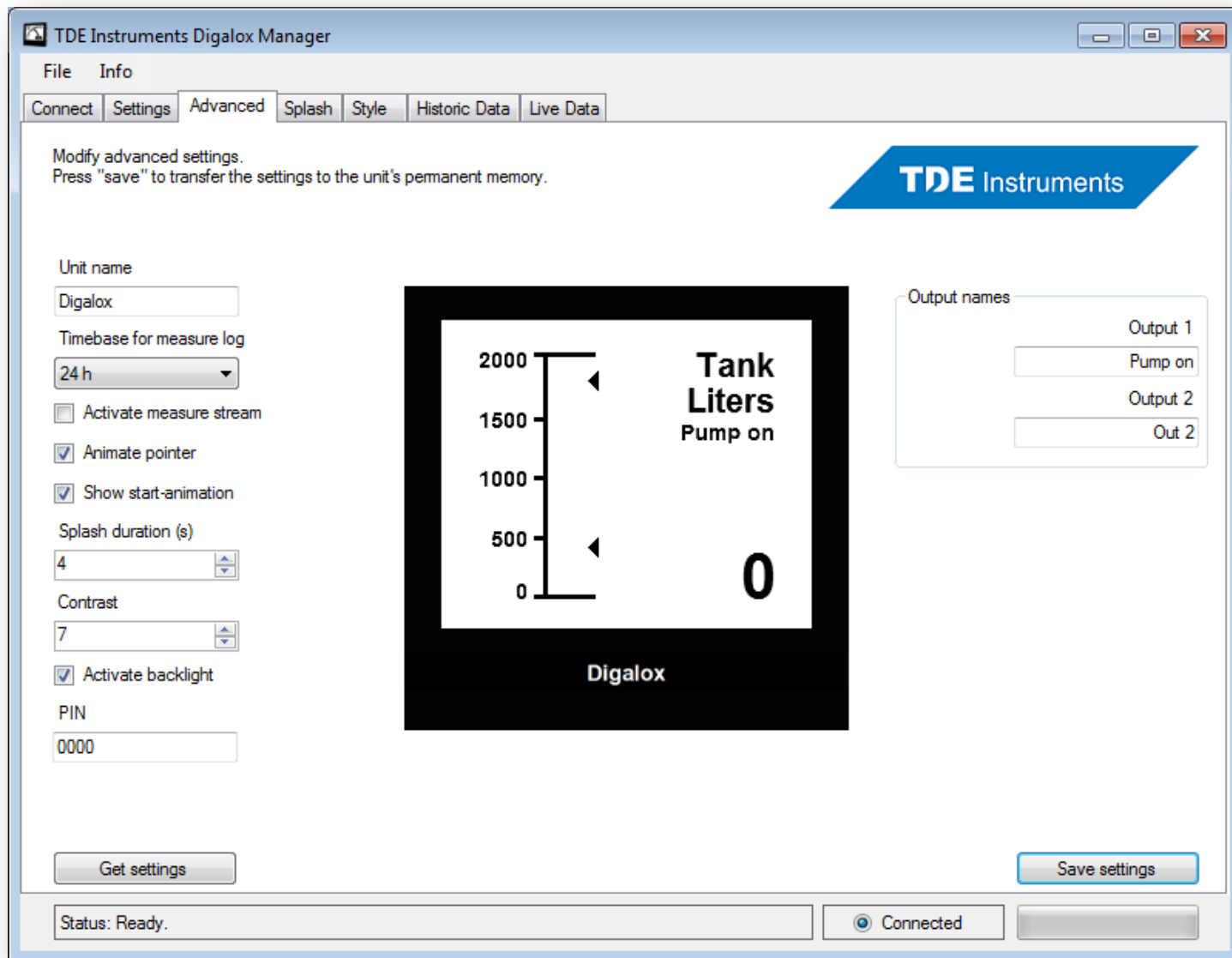
Status: Ready.

Connected

- Thresholds are shown
- Output 1 is activated



- Change to tab „Advanced“
- Type text for output 1 „Pump on“



- Configuration completed

TDE Instruments

Thank you for your attention!

TDE Instruments GmbH
Gewerbestraße 8
D-71144 Steinenbronn
Info@tde-instruments.de
+49 7157 20801

